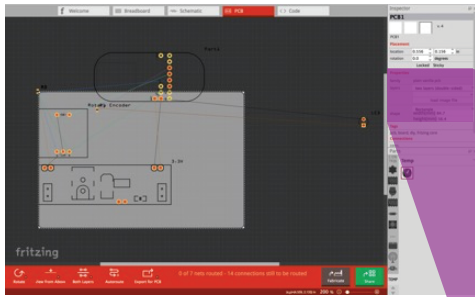
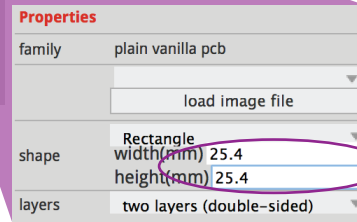


Fritzing PCB Notes:

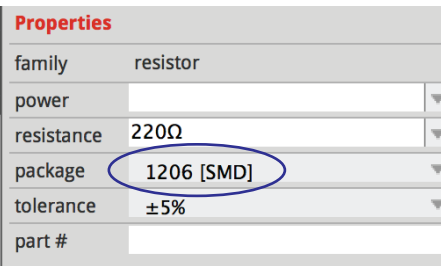
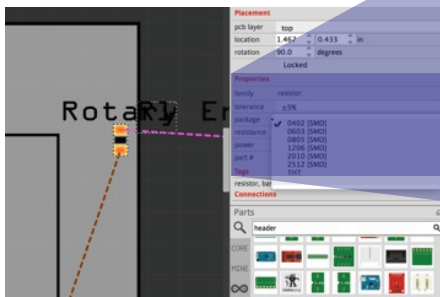
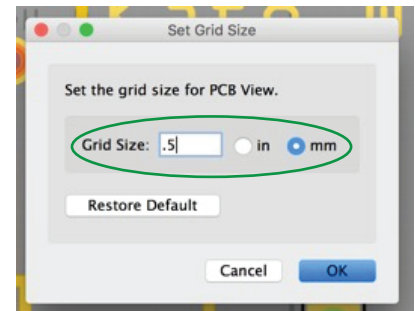
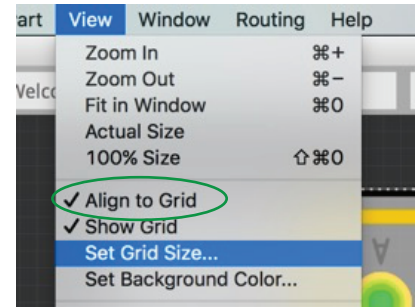
INITIAL SET UP:



Change the PCB BOARD SIZE to be 1 sq in
(or 25.4 x 25.4 cm)



Set the GRID SIZE to be .5mm & make sure "ALIGN TO GRID" is checked off.

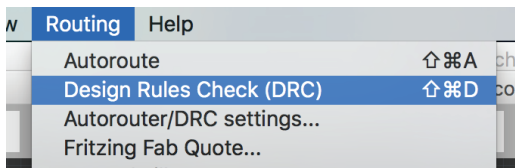


Make sure all components are using the 1206 SMD PACKAGE.
If that is not an option, see if there is a different package with SMD in the name ('SMD' stands for 'Surface Mount')

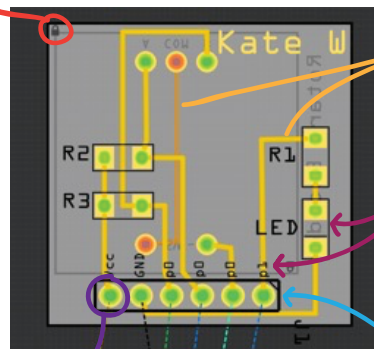
GENERAL THINGS TO NOTE:

LOCKING the board (or a component) will make it more difficult for you to accidentally select it.

The light grey square is your board. Everything in your circuit that is going to be soldered on to the PCB must be on that board.



Always do a DESIGN RULES CHECK after configuring your components or routing. The DRC will indicate whether your board can actually be printed validly.



Things marked in YELLOW are on the front of the board. Things in ORANGE are on the back.

Treat 'yo self: Labeling pins & parts (& their orientation) clearly will make your life significantly easier when you go to solder/test the board

Remember that things the board shows as circles are HOLES through the board. If you have a hole, there should be no wires routed over it.

You should include a header on the board that will connect up to your bean. Don't try to directly connect pins on the bean.